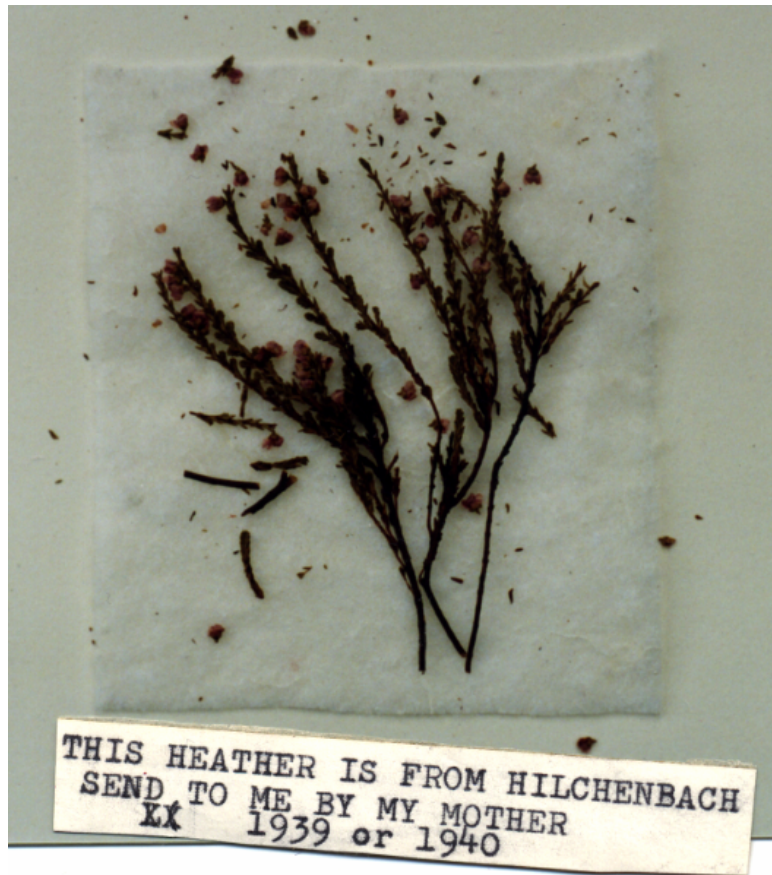


Heather from the Garden of Julie Sommer



This sprig of Heather (*Calluna Vulgaris*, bruyère) was found among the effects of my mother, Ruth Holländer, after her death in 1983. The heather was wrapped in plastic with the above note attached. In 1998 it was opened and the greenhouse technician at Carleton University tried, unfortunately without success, to grow the seeds. He was of the opinion that the heather had been cut early so as to show the maximum of colour and thus too early for the seeds to have matured. We had hoped to grow the heather, planting one in Ottawa and sending one to Hilchenbach.